



CMP

LAN/Ethernet Cable

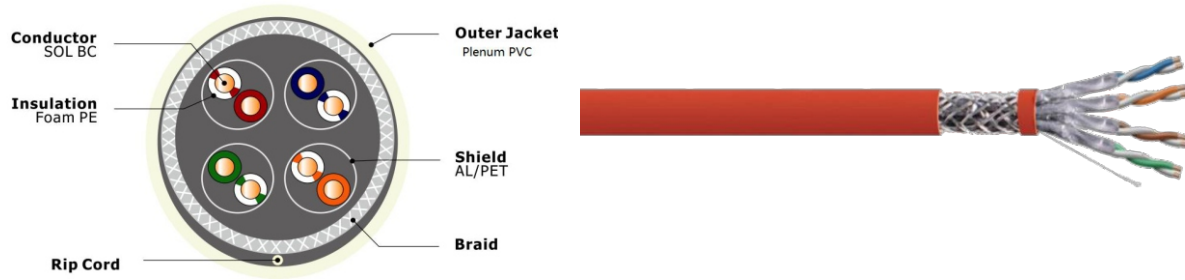
Good quality & Good service based on reasonable prices.

- + OEM customized production according to your requirements.
- + Standardized products and services according to our own brand.



S/FTP CAT 7 600MHz CMP UL/ETL

S/FTP CAT 7 BC CMP



COMPLIANCE (Reference Standard and Certificates)

- ISO/IEC 11801-1 Ed.1.0
- ANSI/TIA-568-C.2、ANSI/TIA-568.2-D
- UL444、UL1581、UL1666、IEC60332-1、EN50399

Application Support

- 10GBASE-T、1000BASE-T、100BASE-T、10BASE-T
- 1Volp、ISDN、Token、100MTPPDM、Analogand Datavideo、POE Type1,2,3,4

Construction

Conductor:	0.585±0.005mm Solid Bare Copper
Pairs:	4 Pairs
Insulation:	1.50±0.05 mm FEP
Insulation Colors:	Blue-White/Blue, Orange-White/Orange Green-White/Green, Brown-White/Brown
Shielded:	AL/PET Foil, 100% Coverage Cover every pair
Overall Shield:	Aluminum Foil
Braiding:	TC or Al_Mg, 40% Coverage
Rip Cord:	Kelvar
Out Jacket:	7.8±0.3 mm PVC CMP UL/ETL

Electrical Characteristics

DC Resistance	<9.38 Ohms/100m @20°C
DC Resistance unbalance	2% @ 20°C
Mutual Capacitance	5.6 nF/100m
Characteristic Impedance	1 - 100 MHz : 100±15 Ohms 100 - 750 MHz : 100±25 Ohms
Max Frequency	750MHz
Capacitance Unbalance	330 pF/100m
NVP(传输速率)	74%
Delay Skew	≤ 25ns/100m



S/FTP CAT 7 600MHz CMP UL/ETL

Performance Characteristics

Frequency	RL (Min.)	Insertion Loss(Max.)	ACR	PSACR	NEXT (Min.)	PSNEXT (Min.)	ACR-F	PS ACR-F
MHz	dB	dB/100m	dB/100m	dB/100m	dB	dB	dB/100m	dB/100m
1	20/32.7	2.1/1.8	75.9/101.9	72.9/108.2	78/103.7	75/110.5	78/94.8	75/102.3
4	23/27.4	3.7/3.4	74.3/103.4	71.3/113.8	78/106.8	75/117.2	78/90.5	75/91.8
10	25/35.9	5.8/5.3	72.2/106.3	69.2/115.8	78/111.6	75/121.1	78/109.5	75/116.2
16	25/36.6	7.3/6.8	70.7/107	67.7/115.1	78/113.9	75/121.9	78/107.5	75/114.5
20	25/36.4	8.2/7.6	69.8/102.5	66.8/109.7	78/110.2	75/117.4	78/115.7	75/117.7
31.25	23.6/39.2	10.3/9.7	67.7/102.7	64.7/109.8	78/112.4	75/119.5	75.4/106.8	72.4/109.8
62.5	21.5/33.6	62.5/13.9	63.4/100.1	60.4/107.7	78/113.5	75/121.6	69.4/102.4	66.4/109.8
100	20.1/37.8	18.5/17.7	59.5/90.6	56.5/99.8	78/108.3	75/118.7	65.3/100.8	62.3/103
200	18/38.9	26.5/25.2	47.4/87.3	44.4/93.6	73.9/112.5	70.9/118.7	59.3/85.9	54.3/89.5
300	17.3/36.9	32.7/31.1	38.6/75.1	35.6/81.1	71.2/106.5	68.2/112.2	55.8/84.7	52.8/90.1
400	17.3/36.2	38/36.1	31.4/71.9	28.4/80.8	69.4/108	66.4/116.9	53.3/71.9	50.3/76.8
500	17.3/34.8	42.8/40.4	25.2/55.7	22.2/62.9	67.9/96.1	64.9/103.4	51.3/79.6	48.3/83.6
600	17.3/32.8	47.1/44.4	19.6/52.5	16.6/57.4	66.7/97	63.7/101.8	49.7/69.9	46.7/71.7
※700	33.5	48.2	50.6	57.8	98.8	106.0	59.9	61.0
※800	29.9	51.8	42.8	51.9	94.6	103.7	60.9	62.9
※850	31.0	53.9	28.4	40.8	82.2	94.7	48.1	55.2

※Note: The above transmission performance for the 100M, 20±2°C under the conditions tested.

※Note: Values for frequencies beyond 600mHZ are for information only

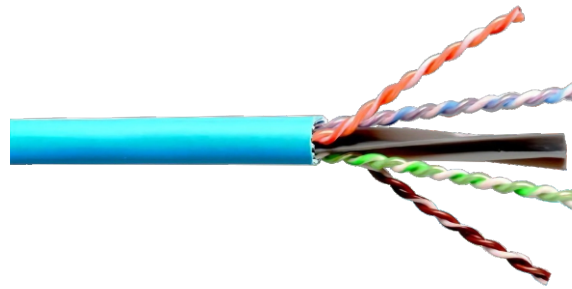
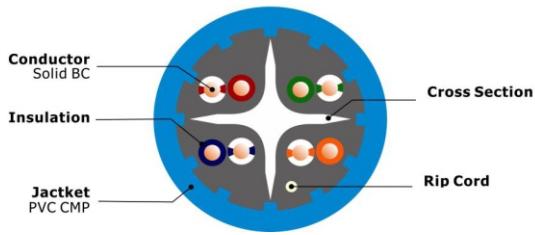
Order Informations

Marking	HELLOSIGNAL NO.7112405 S/FTP CAT7 600MHz 4PR 23AWG PVC CMP UL/ETL E***** ...305M(1000FT) (or Per customer's request)
---------	---



U/UTP CAT 6A ILS PVC CMP UL/ETL

U/UTP CAT 6A ILS PVC CMP



COMPLIANCE (Reference Standard and Certificates)

- ISO/IEC 11801-1 Ed.1.0
- ANSI/TIA-568-C.2、ANSI/TIA-568.2-D
- UL444、UL1581、UL1666、IEC60332-1、EN50399

Application Support

- 10GBASE-T、1000BASE-T、100BASE-T、10BASE-T
- 1Volp、ISDN、Token、100MTPPDM、Analogand Datavideo、POE Type1,2,3,4

Construction

Conductor:	0.565±0.005mm Solid Bare Copper
Pairs:	4 Pairs
Insulation:	1.02±0.05 mm FEP
Insulation Colors:	Blue-White/Blue, Orange-White/Orange Green-White/Green, Brown-White/Brown
Cross Section:	FEP OR LSZH CROSSWEB
Rip Cord:	Kevlar
Out Jacket:	6.5±0.2 mm PVC CMP

Electrical Characteristics

DC Resistance	<9.38 Ohms/100m @20°C
DC Resistance unbalance	4% @ 20°C
Mutual Capacitance	5.6 nF/100m
Characteristic Impedance	1 - 100 MHz : 100±15 Ohms
	100 - 200 MHz : 100±22 Ohms
	200 - 500 MHz : 100±32 Ohms
Max Frequency	500MHz
Capacitance Unbalance	330 pF/100m
NVP(传输速率)	67%
Delay Skew	≤ 45ns/100m



U/UTP CAT 6A ILS PVC CMP UL/ETL

Performance Characteristics

Frequency	RL (Min.)	Insertion Loss(Max.)	Propagation Delay (Max.)	Delay Skew(Max.)	NEXT (Min.)	PSNEXT (Min.)	ELNEXT (Min.)	PSELNEXT (Min.)
MHz	dB	dB/100m	ns/100m	ns/100m	dB	dB	dB/100m	dB/100m
1	20.0	2.1	570.0	45.0	74.3	72.3	67.8	64.8
4	23.0	3.8	552.0	45.0	65.3	63.3	55.8	52.8
10	24.5	6.0	545.4	45.0	59.3	57.3	47.8	44.7
16	25.0	7.6	543.0	45.0	56.2	54.2	43.7	40.7
20	25.0	8.5	542.1	45.0	54.8	52.8	41.8	38.8
31.25	23.6	10.7	540.4	45.0	51.9	49.9	37.9	34.9
62.5	21.5	15.4	538.6	45.0	47.4	45.4	31.9	28.9
100	20.1	19.8	537.6	45.0	44.3	42.3	27.8	24.8
200	18.0	29.0	536.1	45.0	39.8	37.8	21.8	18.8
300	16.8	36.4	536.1	45.0	37.1	35.1	18.3	15.3
400	15.9	43.0	535.8	45.0	35.3	33.3	15.8	12.8
500	15.2	45.3	535.6	45.0	33.8	31.8	13.8	10.8

※Note: The above transmission performance for the 100M, 20±2°C under the conditions tested.

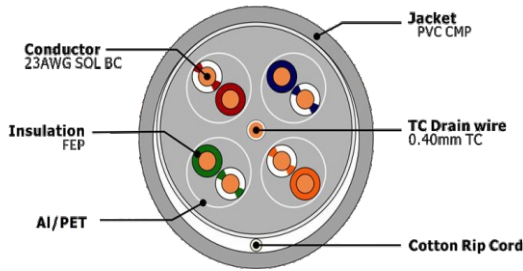
Order Informations

Marking	HELLOSIGNAL NO.7112305 U/UTP CAT6A 4PR 23AWG PVC CMP E***** ...305M(1000FT) (or Per customer's request)
---------	--



U/FTP CAT 6A PVC CMP UL/ETL

U/FTP CAT 6A BC PVC CMP



COMPLIANCE (Reference Standard and Certificates)

- ISO/IEC 11801-1 Ed.1.0
- ANSI/TIA-568-C.2、ANSI/TIA-568.2-D
- UL444、UL1581、UL1666、IEC60332-1、EN50399

Application Support

- 1000BASE-T、1000BASE-TX、100BASE-T、100BASE-TX、100VG-AnyLAN、ATM
- 1Volp、ISDN、Token、100MTPPDM、Analogand Datavideo、POE Type1,2,3,4

Construction

Conductor:	23 AWG Solid Bare Copper
Pairs:	4 Pairs
Insulation:	1.02 mm FEP
Insulation Colors:	Blue-White/Blue,Orange-White/Orange Green-White/Green,Brown-White/Brown
Overall Shield:	Individual Pair shield,Al/PET Foil,Foil face out
Rip Cord:	Kevlar
Out Jacket:	8.0±0.2 mm PVC CMP

Electrical Characteristics

Impedance	4 - 100 MHz : 100±15 Ohms
	100 - 200 MHz : 100±22 Ohms
	200 - 500 MHz : 100±32 Ohms
Max.Conductor DC Resistance 20°C	8.7 Ohms/100m
Res. unbalance (%)	Max. 2.5
Pair to Ground Capacitance Unbalance	330 pF/100m
Transfer Impedance	Max 10 mOhms/m @100Mhz
Installation temp.	-30 - 50°C
Operation temp.	-20 - 75°C



U/FTP CAT 6A PVC CMP UL/ETL

Performance Characteristics

Frequency	RL (Min.)	Insertion Loss(Max.)	Propagation Delay (Max.)	Delay Skew(Max.)	NEXT (Min.)	PSNEXT (Min.)	ELNEXT (Min.)	PSELNEXT (Min.)
MHz	dB	dB/100m	ns/100m	ns/100m	dB	dB	dB/100m	dB/100m
1	20.0	2.1	570.0	45.0	74.3	72.3	67.8	64.8
4	23.0	3.8	552.0	45.0	65.3	63.3	55.8	52.8
10	25.0	6.0	545.0	45.0	59.3	57.3	47.8	44.7
16	25.0	7.6	543.0	45.0	56.2	54.2	43.7	40.7
20	25.0	8.5	542.0	45.0	54.8	52.8	41.8	38.8
31.25	25.0	10.7	540.0	45.0	51.9	49.9	37.9	34.9
62.5	21.5	15.4	539.0	45.0	47.4	45.4	31.9	28.9
100	20.1	19.8	538.0	45.0	44.3	42.3	27.8	24.8
200	18.0	29.0	537.0	45.0	39.8	37.8	21.8	18.8
300	17.3	36.4	536.0	45.0	37.1	35.1	18.3	15.3
400	17.3	43.0	536.0	45.0	35.3	33.3	15.8	12.8
500	17.3	45.3	536.0	45.0	33.8	31.8	13.8	10.8

Note: The above transmission performance for the 100M, 20±2°C under the conditions tested.

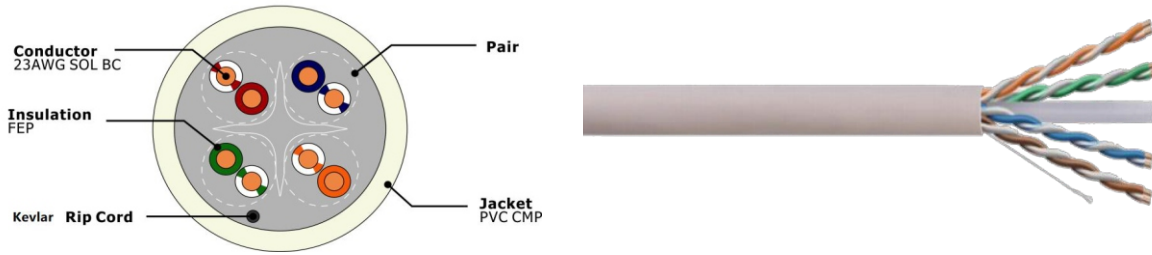
Order Informations

Marking	HELLOSIGNAL NO.7112325 U/FTP CAT6A 4PR 23AWG PVC CMP XXX(or Per customer's request)
---------	--



U/UTP CAT 6 PVC CMP UL/ETL

U/UTP CAT 6 BC PVC CMP



COMPLIANCE (Reference Standard and Certificates)

- ISO/IEC 11801-1 Ed.1.0
- ANSI/TIA-568-C.2、ANSI/TIA-568.2-D
- UL444、UL1581、UL1666、IEC60332-1、EN50399

Application Support

- 1000BASE-T、1000BASE-TX、100BASE-T、100BASE-TX、100VG-AnyLAN、ATM
- 1Volp、ISDN、Token、100MTPPDM、Analogand Datavideo、POE Type1,2,3,4

Construction

Conductor:	0.57±0.005mm Solid Bare Copper
Pairs:	4 Pairs
Insulation:	1.02±0.05 mm FEP
Insulation Colors:	Blue-White/Blue, Orange-White/Orange Green-White/Green, Brown-White/Brown
Cross Section:	FEP or LSZH CROSSWEB
Rip Cord:	Kevlar
Out Jacket:	5.6±0.2 mm Plenum PVC

Electrical Characteristics

DC Resistance	<9.38 Ohms/100m @20°C
DC Resistance unbalance	5% @ 20°C
Mutual Capacitance	5.6 nF/100m
Characteristic Impedance	1 - 100 MHz : 100±15 Ohms
	100 - 250 MHz : 100±20 Ohms
Max Frequency	250MHz
Capacitance Unbalance	330 pF/100m
NVP(传输速率)	65%
Delay Skew	≤ 45ns/100m



U/UTP CAT 6 PVC CMP UL/ETL

Performance Characteristics

Frequency	RL (Min.)	Insertion Loss(Max.)	Propagation Delay (Max.)	Delay Skew(Max.)	NEXT (Min.)	PSNEXT (Min.)	ELNEXT (Min.)	PSELNEXT (Min.)
MHz	dB	dB/100m	ns/100m	ns/100m	dB	dB	dB/100m	dB/100m
1	20.0	2.0	570.0	45.0	74.0	72.0	67.8	64.8
4	23.0	3.8	552.0	45.0	65.0	63.0	55.7	52.7
10	25.0	6.0	545.0	45.0	59.0	57.0	47.8	44.8
16	25.0	7.6	543.0	45.0	56.0	54.0	43.7	40.7
20	25.0	8.5	542.0	45.0	55.0	53.0	41.7	38.7
31.25	23.6	10.7	540.0	45.0	52.0	50.0	37.9	34.9
62.5	21.5	15.4	539.0	45.0	47.0	45.0	31.8	28.8
100	20.1	19.8	538.0	45.0	44.3	42.3	27.8	24.8
200	18.0	29.0	537.0	45.0	39.7	37.7	21.7	18.7
250	17.3	32.8	536.0	45.0	38.0	36.0	19.8	16.8

※Note: The above transmission performance for the 100M, 20±2°C under the conditions tested.

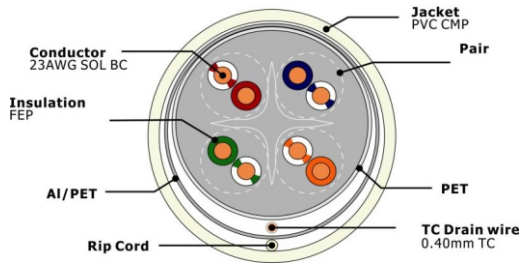
Order Informations

Marking	HELLOSIGNAL NO.7112205 U/UTP CAT6 4PR 23AWG PVC CMP UL/ETL E***** ...305M(1000FT) (or Per customer's request)
---------	---



F/UTP CAT 6 PVC CMP UL/ETL

F/UTP CAT 6 BC PVC CMP



COMPLIANCE (Reference Standard and Certificates)

- ISO/IEC 11801-1 Ed.1.0
- ANSI/TIA-568-C.2、ANSI/TIA-568.2-D
- UL444、UL1581、UL1666、IEC60332-1、EN50399

Application Support

- 1000BASE-T、1000BASE-TX、100BASE-T、100BASE-TX、100VG-AnyLAN、ATM
- 1Volp、ISDN、Token、100MTPPDM、Analogand Datavideo、POE Type1,2,3,4

Construction

Conductor:	0.57±0.005mm Solid Bare Copper
Pairs:	4 Pairs
Insulation:	1.15±0.05 mm HDPE
Insulation Colors:	Blue-White/Blue,Orange-White/Orange Green-White/Green,Brown-White/Brown
Cross Section:	FEP or LSZH Crossweb
Shield 1:	PET Foil
Drain Wire:	0.4mmTC
Shield 2:	Al/PET Foil, Foil Face Out
Rip Cord:	Kevlar
Out Jacket:	7.4±0.3 mm Plenum PVC

Electrical Characteristics

DC Resistance	<9.38 Ohms/100m @20℃
DC Resistance unbalance	5% @ 20℃
Mutual Capacitance	5.6 nF/100m
Characteristic Impedance	1 - 100 MHz : 100±15 Ohms
	100 - 250 MHz : 100±20 Ohms
Max Frequency	250MHz
Capacitance Unbalance	330 pF/100m
NVP(传输速率)	63%
Delay Skew	≤ 45ns/100m



F/UTP CAT 6 PVC CMP UL/ETL

Performance Characteristics

Frequency	RL (Min.)	Insertion Loss(Max.)	Propagation Delay (Max.)	Delay Skew(Max.)	NEXT (Min.)	PSNEXT (Min.)	ELNEXT (Min.)	PSELNEXT (Min.)
MHz	dB	dB/100m	ns/100m	ns/100m	dB	dB	dB/100m	dB/100m
1	20.0	2.0	570.0	45.0	74.0	72.0	67.8	64.8
4	23.0	3.8	552.0	45.0	65.0	63.0	55.7	52.7
10	25.0	6.0	545.0	45.0	59.0	57.0	47.8	44.8
16	25.0	7.6	543.0	45.0	56.0	54.0	43.7	40.7
20	25.0	8.5	542.0	45.0	55.0	53.0	41.7	38.7
31.25	23.6	10.7	540.0	45.0	52.0	50.0	37.9	34.9
62.5	21.5	15.4	539.0	45.0	47.0	45.0	31.8	28.8
100	20.1	19.8	538.0	45.0	44.3	42.3	27.8	24.8
200	18.0	29.0	537.0	45.0	39.7	37.7	21.7	18.7
250	17.3	32.8	536.0	45.0	38.0	36.0	19.8	16.8

※Note: The above transmission performance for the 100M, 20±2°C under the conditions tested.

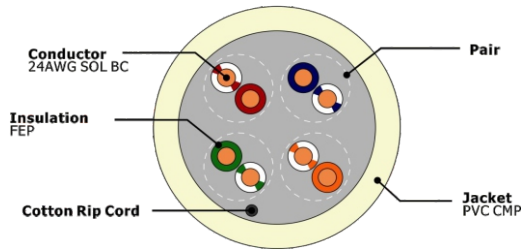
Order Informations

Marking	HELLOSIGNAL NO.7112215 F/UTP CAT6 4PR 23AWG PVC CMP UL/ETL E***** ...305M(1000FT) (or Per customer's request)
---------	---



U/UTP CAT 5E PVC CMP UL/ETL

U/UTP CAT 5E BC PVC CMP



COMPLIANCE (Reference Standard and Certificates)

- ISO/IEC 11801-1 Ed.1.0
- ANSI/TIA-568-C.2、ANSI/TIA-568.2-D
- UL444、UL1581、UL1666、IEC60332-1、EN50399

Application Support

- 1000BASE-T、100BASE-T、10BASE-T
- 1Volp、ISDN、Token、100MTPPDM、Analogand Datavideo、POE Type1,2,3,4

Construction

Conductor:	0.50mm Solid Bare Copper
Pairs:	4 Pairs
Insulation:	0.90±0.05 mm FEP
Insulation Colors:	Blue-White/Blue, Orange-White/Orange Green-White/Green, Brown-White/Brown
Rip Cord:	Kevlar
Out Jacket:	5.1±0.2 mm PVC Plenum

Electrical Characteristics

DC Resistance	<9.38 Ohms/100m @20°C
DC Resistance unbalance	5% @ 20°C
Mutual Capacitance	5.6 nF/100m
Characteristic Impedance	1 - 100 MHz : 100±15 Ohms
	100 - 350 MHz : 100±22 Ohms
Max Frequency	100MHz
Capacitance Unbalance	330 pF/100m
NVP(传输速率)	67%
Delay Skew	≤ 45ns/100m



U/UTP CAT 5E PVC CMP UL/ETL

Performance Characteristics

Frequency	RL (Min.)	Insertion Loss(Max.)	Propagation Delay (Max.)	Delay Skew(Max.)	NEXT (Min.)	PSNEXT (Min.)	ELNEXT (Min.)	PSELNEXT (Min.)
MHz	dB	dB/100m	ns/100m	ns/100m	dB	dB	dB/100m	dB/100m
1	20.0	2.0	521.0	45.0	65.3	62.3	61.0	61.0
4	23.0	3.9	504.0	45.0	56.3	53.3	48.0	48.0
10	25.0	6.2	498.0	45.0	50.3	47.3	41.0	41.0
16	25.0	7.9	496.0	45.0	47.2	44.2	36.0	36.0
20	25.0	8.9	495.0	45.0	45.8	42.8	34.0	34.0
31.25	23.6	11.2	494.0	45.0	42.9	39.9	31.0	31.0
62.5	21.5	16.2	492.0	45.0	38.4	35.4	25.0	25.0
100	20.1	21.0	491.0	45.0	35.3	32.3	21.0	21.0

※Note: The above transmission performance for the 100M, 20±2°C under the conditions tested.

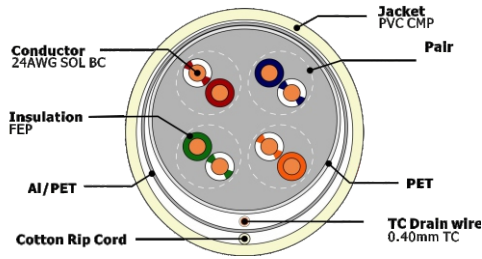
Order Informations

Marking	HELLOSIGNAL NO.71121045 U/UTP CAT5E 4PR 24AWG PVC CMP UL/ETL E*****...305M(1000FT) (or Per customer's request)
---------	---



F/UTP CAT 5E PVC CMP UL/ETL

F/UTP CAT 5E BC PVC CMP



COMPLIANCE (Reference Standard and Certificates)

- ISO/IEC 11801-1 Ed.1.0
- ANSI/TIA-568-C.2、ANSI/TIA-568.2-D
- UL444、UL1581、UL1666、IEC60332-1、EN50399

Application Support

- 1000BASE-T、100BASE-T、10BASE-T
- 1Volp、ISDN、Token、100MTPPDM、Analogand Datavideo、POE Type1,2,3,4

Construction

Conductor:	0.50±0.005mm Solid Bare Copper
Pairs:	4 Pairs
Insulation:	1.01±0.05 mm FEP
Insulation Colors:	Blue-White/Blue,Orange-White/Orange Green-White/Green,Brown-White/Brown
Shielded 1:	PET Foil
Drain Wire:	0.40±0.005mm TC
Overall Shield:	Al/PET Foil,Foil face out
Rip Cord:	Kevlar
Out Jacket:	6.0±0.2 mm PVC CMP UL/ETL

Electrical Characteristics

DC Resistance	<9.38 Ohms/100m @20°C
DC Resistance unbalance	5% @ 20°C
Mutual Capacitance	5.6 nF/100m
Characteristic Impedance	1 - 100 MHz : 100±15 Ohms
	100 - 350 MHz : 100±22 Ohms
Max Frequency	100MHz
Capacitance Unbalance	330 pF/100m
NVP(传输速率)	67%
Delay Skew	≤ 45ns/100m



F/UTP CAT 5E PVC CMP UL/ETL

Performance Characteristics

Frequency	RL (Min.)	Insertion Loss(Max.)	Propagation Delay (Max.)	Delay Skew(Max.)	NEXT (Min.)	PSNEXT (Min.)	ELNEXT (Min.)	PSELNEXT (Min.)
MHz	dB	dB/100m	ns/100m	ns/100m	dB	dB	dB/100m	dB/100m
1	20.0	2.2	570.0	45.0	65.0	62.0	61.0	61.0
4	23.0	4.2	552.0	45.0	56.0	53.0	48.0	48.0
10	25.0	6.5	545.0	45.0	50.0	47.0	41.0	41.0
16	25.0	8.4	543.0	45.0	47.0	44.0	36.0	36.0
20	25.0	9.3	542.0	45.0	45.0	42.0	34.0	34.0
31.25	23.6	11.6	540.0	45.0	42.0	39.0	31.0	31.0
62.5	21.5	17.0	539.0	45.0	38.0	35.0	25.0	25.0
100	20.1	22.0	538.0	45.0	35.0	32.0	21.0	21.0

※Note: The above transmission performance for the 100M, 20±2°C under the conditions tested.

Order Informations

Marking	HELLOSIGNAL NO.7112115 F/UTP CAT5E 4PR 24AWG PVC CMP UL/ETL ...305M(1000FT) (or Per customer's request)
---------	---

 GLOBAL MARKET

■ China - Head office

Email: info@hello-signal.com
info@zion-communication.com

Mobile/WhatsApp: 0086 15715730101

ADD: Zion Industrial Park, Huaqiao Road,
Jincheng, Lin'an, Zhejiang, China